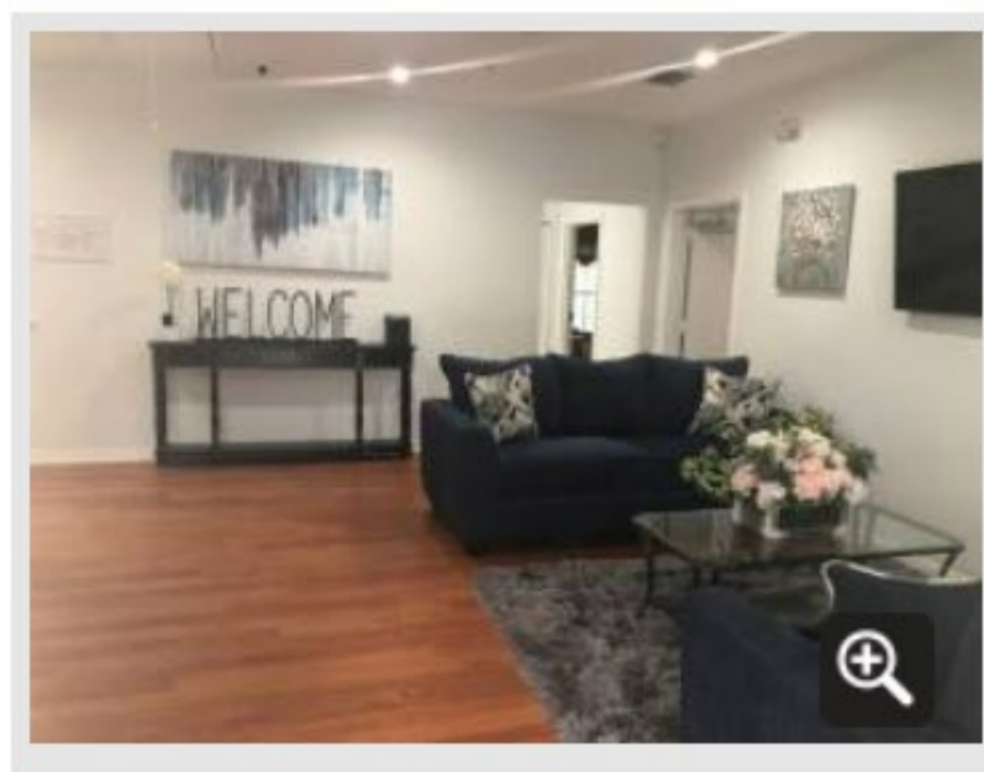




[Home](#) > [News](#) > [Indian River County](#) > [Re-Opening of SafeSpace IRC Emergency Shelter and Outreach Programs](#)

Re-Opening of SafeSpace IRC Emergency Shelter and Outreach Programs

July 14, 2022



SafeSpace Emergency Shelter in Vero Beach

A major milestone in assisting Treasure Coast victims of domestic violence took place on April 7, when the eagerly-awaited SafeSpace Emergency Shelter re-opened in Indian River County.

In just two weeks' time, six women and ten children were welcomed to the facility, which was funded through the generosity and support of John's Island Foundation, IRC Community Foundation, Impact 100 IRC, John's Island Community Service League, Head, Heart & Hands - Indian River Club community, and The Gabby Petito Foundation. In addition, the United Way of IRC has supported SafeSpace for many years with funding for programs and services.

The emergency shelter currently has 19 beds and is designed to expand its capacity to 24 beds based when deemed necessary.

In 2004, the building was forced to close due to damage from two hurricanes; however, SafeSpace continued to provide IRC residents with a comprehensive array of outreach (non-residential) programs to help them transition to an

independent life free from violence.

In 1979, SafeSpace was established in Indian River County to serve victims of domestic violence. It is the only State-Certified Domestic Violence Center on the Treasure Coast and is a single source provider to aid victims seeking assistance to escape intimate partner domestic violence.

Those served by SafeSpace include adults and their children who are or have been victims of intimate partner violence and are from all cultures, geographic, economic backgrounds, ages, and ethnicities. This included 151 adults and 27 children during 2020-21.

Among the tragedies COVID-19 has wrought is a huge increase in the incidence of domestic violence cases, which have been proven to escalate during periods of social distancing and isolation.

For information about SafeSpace, to make a donation or find out how you can help, visit www.safespacefl.org or call the administrative office at 772-223-2399.

The 24-hour hotline number 772-288-7023

We can't stop the cycle of violence alone. Join us as we work to help families live without violence.